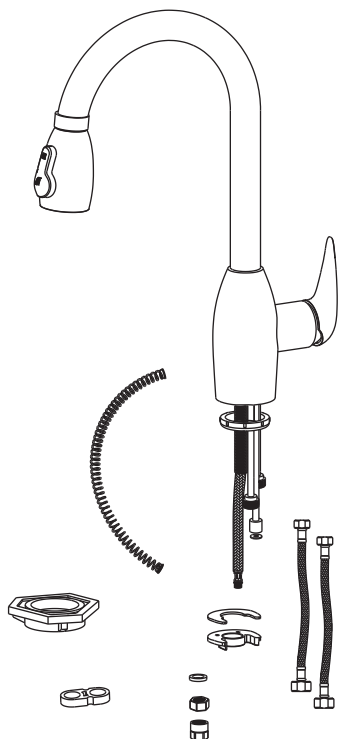


# Installation Instruction

## Single Handle Pull-down Kitchen Faucet

### Before Your Installation

Check to make sure you have the following parts indicated below:



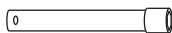
### Tools You Will Need



Adjustable wrench



Phillips screwdriver



Spanner for body  
(supplied)



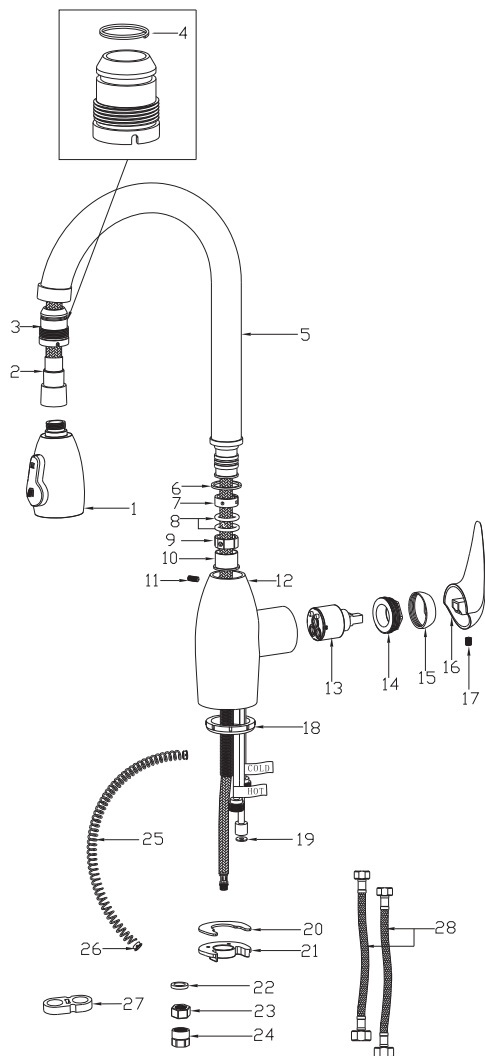
Adjustable wrench



Spanner for aerator  
(supplied)

# Replacement Parts

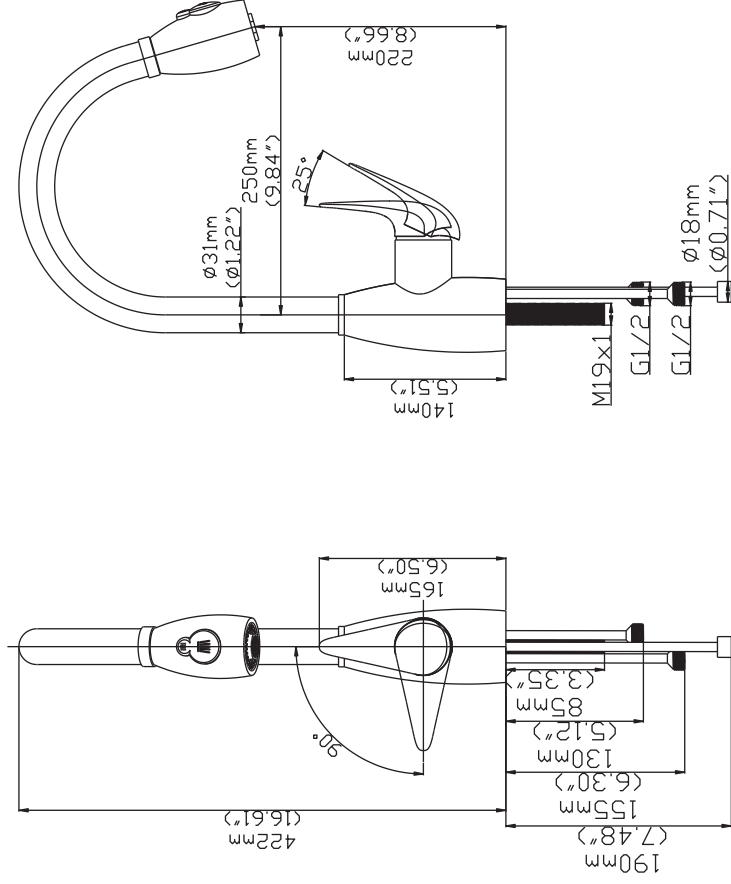
Keep this manual for ordering replacement parts.



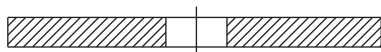
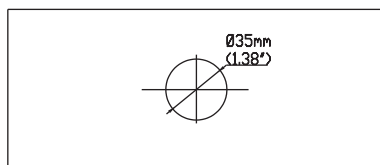
## NO NAME

1. Sprayer
2. Nylon hose
3. Plastic cover
4. Spring ring
5. Spout
6. Anti-friction gasket
7. Plastic cover
8. O-ring
9. Plastic cover
10. Noise muffler
11. Screw
12. Faucet body
13. Cartridge
14. Lock nut
15. Cartridge holder
16. Handle
17. Screw
18. Bottom plastic
19. Flat gasket
20. Rubber gasket
21. Stainless steel gasket
22. Steel gasket
23. Hexagon nut
24. Plastic nut
25. Spring
26. Anti-friction cover
27. Spring holder
28. Hose

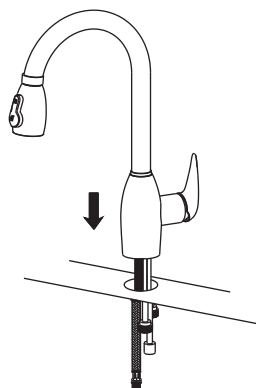
# Product Dimension Drawing



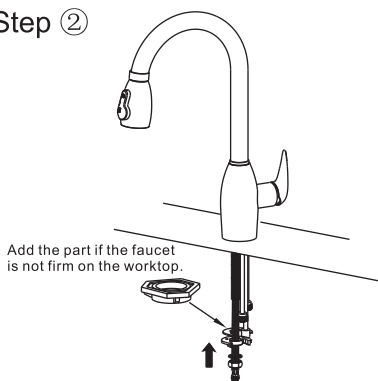
# Faucet Installation Procedures



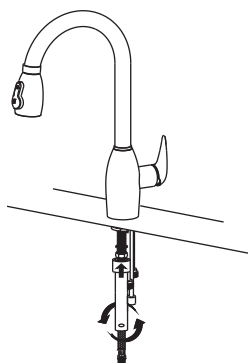
Step ①



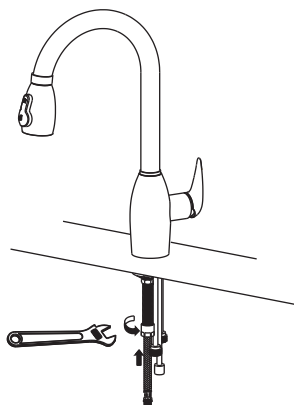
Step ②



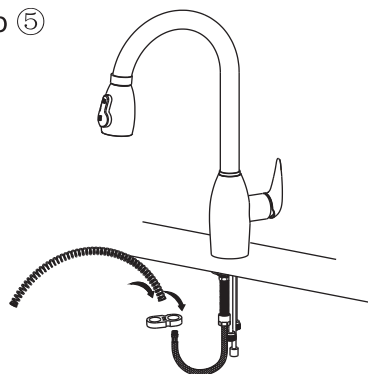
Step ③



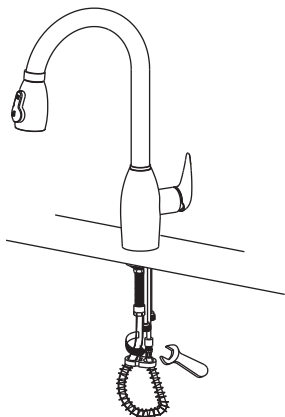
Step ④



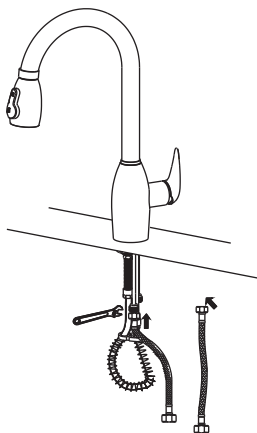
Step ⑤



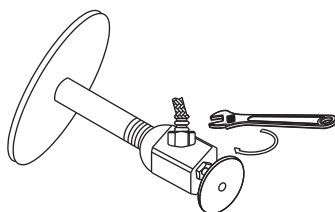
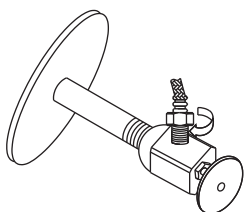
Step ⑥



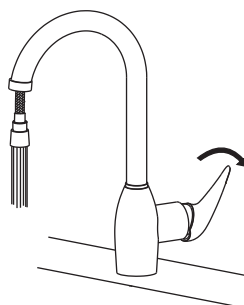
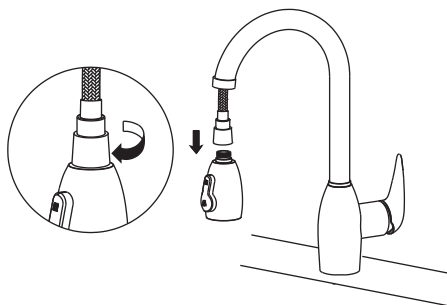
Step ⑦



Step ⑧



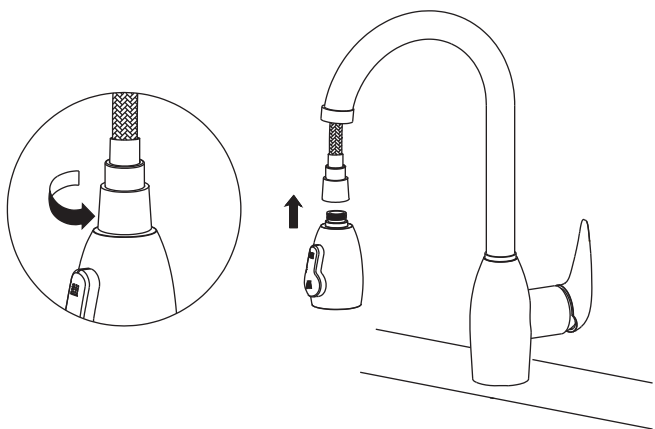
Step ⑨



**Notice:**

Please removing all of the sand, silt and other things from the water hose before assembling, to avoid blocking the faucet and effecting water rate. Please use the special tools to disassemble it and wash with pneumatic equipment, if the faucet blocked.

Step ⑩



Step ⑪

